

Department of Engineering
Tim Bryan, P.E., County Engineer

3137 South Liberty Street, Canton, MS 39046
Office (601) 790-2525 FAX (601) 859-3430

MEMORANDUM

September 18, 2023

To: Sheila Jones, Supervisor, District I
Trey Baxter, Supervisor, District II
Gerald Steen, Supervisor, District III
Karl Banks, Supervisor, District IV
Paul Griffin, Supervisor, District V

From: Tim Bryan, P.E., PTOE
County Engineer

Re: 2023 DSITE Fall Meeting
Institute of Transportation Engineers

The Engineering Department is requesting permission for the County Engineer, Tim Bryan, to attend the 2023 Fall Meeting for the Institute of Transportation Engineers in Lafayette, Louisiana on October 5 & 6, 2023 and pay all associated costs.

SHEILA JONES
District One

TREY BAXTER
District Two

GERALD STEEN
District Three

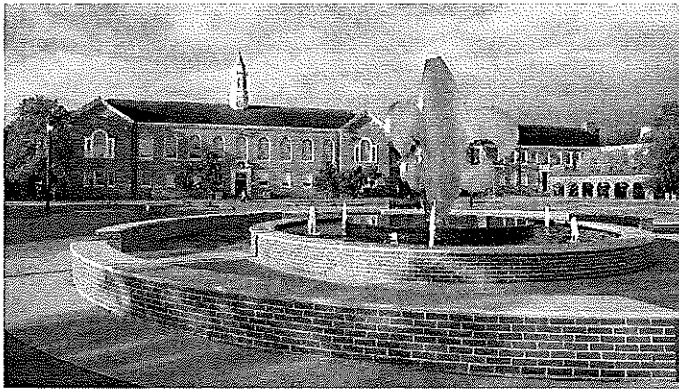
KARL BANKS
District Four

PAUL GRIFFIN
District Five



2023 Fall Meeting

[Join Today!](#)



ITE International Calendar



Search for...

Search

2023 FALL MEETING

Join us for our 2023 Fall Meeting

October 5 & 6, 2023

Location: Rosa Parks Transportation Center

101 Jefferson Street

Lafayette, LA 70501

AGENDA - More details to come

Conference - October 5th

Business Meeting - October 6th

Categories

- No categories

Meta

- [Log in](#)
- [Entries feed](#)
- [Comments feed](#)
- [WordPress.org](#)

HOTEL INFORMATION

TBD

REGISTRATION

2023 Fall Meeting

Thu Oct 5 2023, 08:00am CDT - Fri Oct 6 2023, 12:00pm CDT

	Price	Qty
Students/Speakers	Free	<input type="text" value="v"/>
Public Sector/Private Sector Member	\$75	<input type="text" value="v"/>
Non-Member	\$100	<input type="text" value="v"/>

Full name	<input type="text"/>
Organization name	<input type="text"/>
Email	<input type="text"/>
Phone	<input type="text"/>

Register!

SPONSORSHIP

If you would like to sponsor the DSITE 2023 Fall Meeting please visit our [Sponsor Page](#) or contact William Case Fulcher at william.fulcher@neel-schaffer.com. Sponsorship levels start at \$200/sponsor.

[Home](#) [Sign In](#) [Membership Information](#) [DSITE Events](#) [Directory](#) [Contact Us](#)

Membership website powered by MembershipWorks